

# S.Box Duo S/ST

A novel and innovative approach to manage your patients suffering of Respiratory Impairment or Sleep Breathing Disorders

T R E A T M E N T



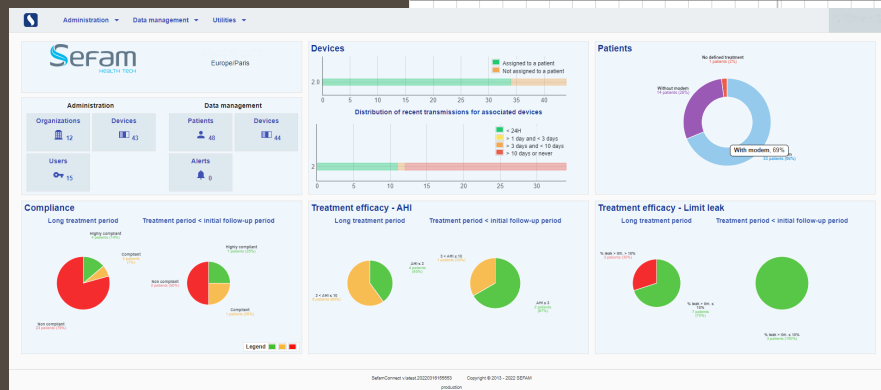
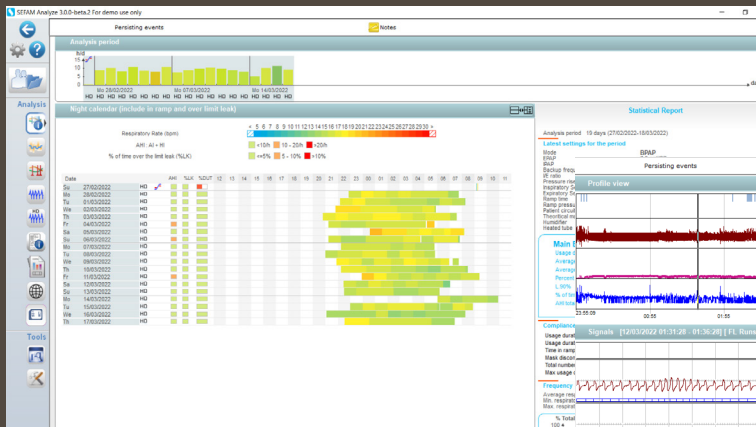
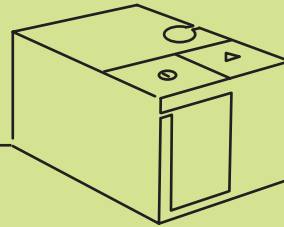
- ▷ Design
- ▷ Ergonomics
- ▷ Technology
- ▷ e-Health

# S.Box Duo S/ST

- On the platform of S.Box, a new Non Invasive Ventilation (NIV) device for non-dependant patients of Sleep Apnea Syndrome and Chronic Respiratory Failure.
- The key feature of Cloud Connectivity makes patient care more flexible, efficient and yet very easy.
- Data Transmission option with modular - WiFi // GSM Modem, making life easier.

SEFAM Connect Cloud offers remote management of your patient.

\*SEFAM Connect - GDPR compliant cloud solution



# S.Box Duo S/ST

A unique environment and tools to set up, view and remotely monitor your patient on S.Box Duo S/ST

## SEFAM Access Pro

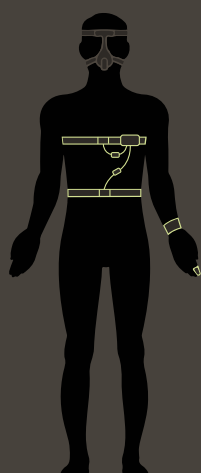
Remote access to settings and monitoring of ventilation parameters



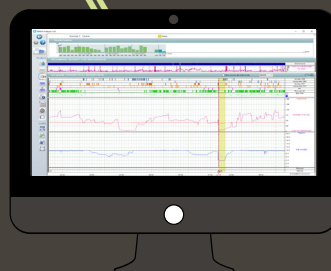
Remote Monitoring



Bluetooth Oximeter



PolyLink - a polygraphy module under controlled environment of BPAP therapy



SEFAM Analyze - a PC software for S.Box Duo S/ST

# Modes and Options

- ▷ **S.Box Duo S** offers following modes:
  1. CPAP
  2. S mode (Spontaneous mode)
- ▷ **S.Box Duo ST** offers following modes:
  1. CPAP
  2. S (Spontaneous mode)
  3. ST (Spontaneous with Time mode)
- ▷ Possible settings of backup frequency (ST mode), I/E ratio (ST Mode) and Rise time (S/ST Mode).
- ▷ S.Box Duo S/ST is available mainly in 3 configurations:
  1. Without humidifier
  2. With humidifier
  3. With humidifier and heated tube

\*Independent to Humidifier, a Heated tube can be attached as an option to S.Box Duo S/ST.

## BPAP Mode

Parameter	Minimum value	Maximum value	Default value
Comfort pressure	3 cm H <sub>2</sub> O	EPAP	4 cm H <sub>2</sub> O
Expiratory positive airway pressure (EPAP)	3 cm H <sub>2</sub> O	IPAP or 20 cm H <sub>2</sub> O	5 cm H <sub>2</sub> O
Inspiratory positive airway pressure (IPAP)	EPAP or 3 cm H <sub>2</sub> O	25 cm H <sub>2</sub> O	15 cm H <sub>2</sub> O
Ramp time	0 min	Maximum ramp time	0 min
Maximum ramp time	0 min	45 min	0 min
Pressure rise time	1 (approx. 200 ms for 10 cm H <sub>2</sub> O)	5 (approx. 600 ms for 10 cm H <sub>2</sub> O)	3 (approx. 400 ms for 10 cm H <sub>2</sub> O)
Inspiratory sensitivity	1	10	5
Expiratory sensitivity	1	10	5
Backup frequency (on S.Box Duo ST)	0 or 4 BPM	25 BPM	10 BPM
I/E ratio	1/4.0	1/0.5	1/2.0

## CPAP Mode

Parameter	Minimum value	Maximum value	Default value
Set pressure	4 cm H <sub>2</sub> O	20 cm H <sub>2</sub> O	8 cm H <sub>2</sub> O
Comfort pressure	4 cm H <sub>2</sub> O	Prescribed Pressure	4 cm H <sub>2</sub> O
Ramp time	0 min	Maximum ramp time	0 min
Maximum ramp time	0 min	45 min	0 min

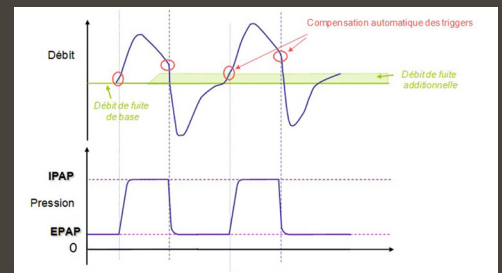
# Salient features and options of **S.Box Duo S/ST** for offering the best Comfort, Control and Connectivity for overall Care of your patients

- ▷ Timeless design by Philippe **STARK**
- ▷ Humidifier option
- ▷ Heated Tube Option
- ▷ Option for connecting Heated Tube independent to Humidifier
- ▷ Patented **FlowSens** Technology for efficient Patient - Machine Synchrony
- ▷ **Mask Fit and Go** - indication of Good Fit or leakage on screen
- ▷ **Humid Control+ and Adaptive Thermo Control** - Automatic adaption to humidification and heating of patient tube
- ▷ **Mask Select** - Freedom of choosing any brand of mask, and calibrate with the Device for leak management and optimal performance
- ▷ Ramp setting
- ▷ **Circuit Select** - Selection of various types of patient tube or option for self calibration with Specific Calibration feature
- ▷ **BT Oximetry**
- ▷ Option for integrated **PolyLink** Module for Polygraphy test at home under controlled BPAP therapy with the S.Box Duo S/ST device
- ▷ Oxygen enrichment with optional non-return Oxygen inlet valve
- ▷ **SEFAM Analyze** - Latest version of Analysis Software, one of the best in Industry, acknowledged and appreciated by leading Physicians and HC providers
- ▷ **SEFAM Access** - a Mobile App for Patient to see own compliance parameters and manage the device settings remotely with BT connectivity
- ▷ **SEFAM Access PRO** - a Comprehensive App for Home Care Providers / Physicians, integrating **iAdapt function** for monitoring delivered parameters like IPAP, EPAP, Respiratory Rate, Tidal Volume, Inspiratory time etc. possible to set mode and parameters remotely, without stopping the BPAP therapy

## FlowSens Technology

Leakage estimation and compensation.

Automatic adaptation of triggers: to maintain performance in the presence of unintentional leakage and avoid the «auto-trigger» phenomenon.



## SEFAM Access Pro

The SEFAM Access Pro application for smartphone or tablet allows to adjust the S.Box Duo S/ST settings and to read in real time the ventilation / patient parameters obtained under machine.



# Ordering Information

## SEFAM S.Box® Duo S SEFAM S.Box® Duo ST

M-116413  
M-116414

S.Box® heated humidifier  
S.Box® humidifier chamber  
Oximeter

M-216430-06  
M-216430-15  
3150-BLE-0101

### Connectivity:

Modem S.Box®  
Module WIFI S.Box®  
PolyLink complete system

M-116500  
M-116900  
M-116700

### Tubing:

S.Box® heated tube  
S.Box® Ø 15 mm standard tube  
S.Box® Ø 22 mm standard tube

M-216430-07  
M-261000-05  
M-261000-06

### Travel accessories:

S.Box® carrying bag  
S.Box® cigarette cable (24 VDC-5 m)

M-816405-00  
M-216430-08

### Machine data analysis:

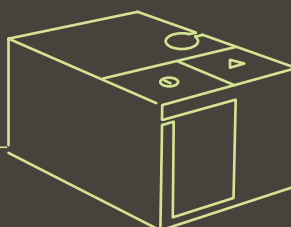
SEFAM Analyze Software  
S.Box® SD card  
S.Box® USB cable

M-215630-04  
M-216430-05  
M-216430-09

### Divers:

Inlet air filters (50 pcs)  
S.Box Power supply

M-315940-01  
M-416410-00



## Physical Specifications

Dimensions (L x W x H):	245 x 140 x 110 mm with side cover 245 x 185 x 110 mm with humidifier
Carrying bag dimensions (L x W x H):	305 x 245 x 180 mm
Weight (without power supply):	1.4 kg with side cover 1.7 kg with humidifier
Power supply weight:	0.5 kg
Operational volume minimum volume of gas in the humidifier chamber:	730 ml
Usable volume of water in humidifier chamber:	350 ml
Maximum liquid level:	Indicated by ↑ <b>MAX</b> ↑ on humidifier chamber

For more information:



## Customer Service

T. +33 (0) 3 83 44 77 40  
F. +33 (0) 3 83 44 99 87  
customerservice@sefam-medical.com

[www.sefam-medical.com](http://www.sefam-medical.com)



**Head Office:** SEFAM - 144 avenue Charles de Gaulle - 92200 Neuilly-sur-Seine - FRANCE  
**Factory and offices:** SEFAM - 10 allée Pelletier Doisy - 54600 Villers-Lès-Nancy - FRANCE

BRO218-01 / 04-2022

**sefam**